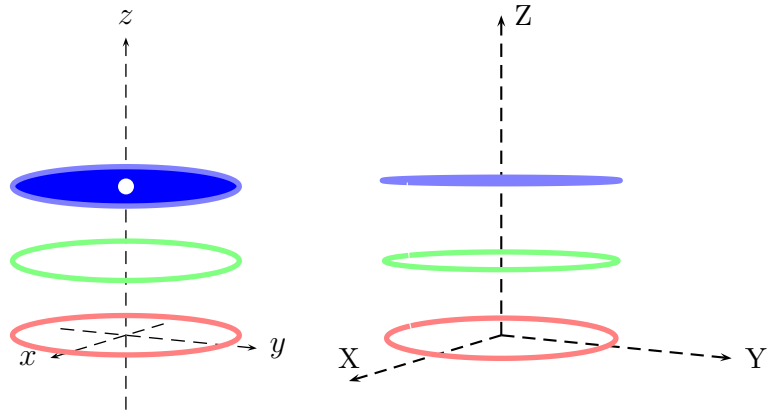


Parallel and central projection



```

\usepackage{pst-3dplot,pst-vue3d}

% pst-3dplot
\begin{pspicture}(-2,-1.25)(2,4.5)
  \psset{Beta=10,Alpha=60}
  \pstThreeDCoor[xMax=2,yMax=2,zMax=4,linecolor=black,linestyle=dashed]
  \psset{linecolor=red,linewidth=2pt}
  \pstThreeDCircle(0,0,0)(1.5,0,0)(0,1.5,0)
  \pstThreeDCircle[linecolor=green](0,0,1)(1.5,0,0)(0,1.5,0)
  \pstThreeDCircle[linecolor=blue,fillstyle=solid,
fillcolor=blue](0,0,2)(1.5,0,0)(0,1.5,0)
  \pstThreeDDot[dotscale=2,linecolor=white](0,0,2)
\end{pspicture}
%
\qqquad
%
% pst-vue3d
\begin{pspicture}(-2,-1.25)(2,5)
  \AxesThreeD[linecolor=black,linestyle=dashed,arrows=->](30,30,40)
  \psset{linecolor=red,linewidth=2pt,normaleLatitude=90,normaleLongitude=0}
  \CircleThreeD(0,0,0){15}
  \CircleThreeD[linecolor=green](0,0,10){15}
  \CircleThreeD[linecolor=blue,fillstyle=solid,fillcolor=blue!50](0,0,20){15}
\end{pspicture}

```