

### TUG 1984 Financial Report (Continued)

Notes: All expense figures through 1984 include an AMS overhead charge of approximately 20%; also, 1985 expense figures, except those with an asterisk (\*), include an overhead charge of 20%. Except as indicated, these remarks apply to the 1984 year.

1. As of December 31, there were 1,109 members/subscribers, including 76 Institutional Members: 39 educational; 37 non-educational.
2. Advertising of TUG and the TUG Meeting/Courses was accomplished through a news release to 19 trade publications, several of which are known to have published the notice, in addition to direct mailings to members and former members.
3. In 1984, 360 back issues were sold. Owing to this popularity, new-issue print orders are set high enough to accommodate expected back issue sales for 3 years.
4. More than 600 copies of Arthur Samuel's "First Grade T<sub>E</sub>X" and 10 copies of Hewlett-Packard's "The HP T<sub>E</sub>X Macros" were sold.
5. 153 members attended the 3-day TUG meeting at Stanford in August. In addition, 75 individuals attended the "Book Design Utilizing T<sub>E</sub>X" and 58 attended the "T<sub>E</sub>X for Beginners" course. The 1985 Stanford University Conference schedule is published in the Calendar Section of this issue; in addition, two-, three- and five-day T<sub>E</sub>X courses are being offered throughout the summer at Illinois Institute of Technology and Harvard, Rutgers and Vanderbilt Universities. Registration fees for the 1985 Stanford Meeting have been reduced substantially, which will result in a significant reduction in meeting receipts.
6. Don Knuth designated a portion of the royalties from sales of *The T<sub>E</sub>Xbook* to be donated to TUG. \$3,324 was received in 1984. In addition, Kellerman & Smith contributed \$1,325, which represents a \$25 royalty to TUG for each copy of VAX/VMS T<sub>E</sub>X sold. In January 1985 a contribution of \$500 was received from Textset, Inc.
7. Larry Beck, Grumman Data Systems, replaced Lynne Price as TUG's liaison with ANSI X3V1.8.
8. The services of Ray Goucher, amounting to approximately half time in 1984 and full time in 1985, are purchased from the AMS. (1985 amounts include salary, AMS benefits and overhead.)
9. The Steering Committee made this amount available to the Finance Committee to subsidize travel and membership/participation fees for individuals when appropriate.
10. Reprogramming to improve the functioning of the TUG data base.
11. Postage/express charges, telephone tolls and supplies, plus programmer and clerical services not associated with production of TUGboat.

Respectfully submitted,  
Samuel B. Whidden, Treasurer

### Advertisement

## INTRODUCING MF MEDLEY

MF MEDLEY includes all the fonts you will need to produce *any T<sub>E</sub>X document* in a sans serif font inspired by Helvetica (we call it *Chel* for Computer Helvetica). Those fonts are:

Chel Book and Bold 10, 7, and 5pt  
Chel Math Italic and Math Symbols 10, 7, and 5pt  
Chel Slant and Math Extensible 10pt  
Chel Monospace 12 pitch

Suppose a function  $f$  is defined by:

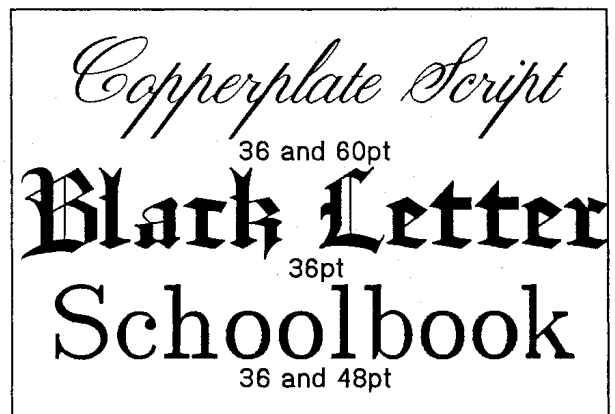
$$f(x) = \sum_{n=0}^{\infty} a_n(x-c)^n, \quad (1.0)$$

where the domain  $X$  of  $f$  is an open interval containing  $c$ . (1.0) may be written in the form:

$$f(x) = f(c) + f'(c)(x-c) + \frac{f''(c)}{2!}(x-c)^2 + \dots + \frac{f^{(n)}(c)}{n!}(x-c)^n + \dots \quad (1.1)$$

(1.1) is called the *Taylor series* for  $f(x)$  at  $c$ .

Besides these excellent modern fonts (the same used to create this ad on a 300 dpi laser printer), the MF MEDLEY package contains an interesting assortment of decorative and titling faces:



This *entire* package of twenty T<sub>E</sub>X compatible fonts can be licensed for output devices with resolutions of 200, 240 or 300 dpi for only \$495 -- that's under *twenty-five dollars* per font.

Write or call for complete details.

The Metafoundry™

Digital Typography & Design  
6565 Frantz Road

(614) 764-6482  
Dublin, Ohio 43017

**T<sub>E</sub>X and METAFONT reports available from the  
Stanford Computer Science Department**

The reports listed below are available from  
Publications, Computer Science Department,  
Stanford University, Stanford, CA 94305  
(415) 497-4776

California residents add 6.5% to total charge.

M = microfiche only, \$2.00 + tax

CS	824	Tung	"LCCD - a language for Chinese character design"	M
CS	828	Knuth, Plass	"Breaking paragraphs into lines"	M
CS	848	Tang	"On the problem of inputting Chinese characters"	M
CS	870	Plass	"Optimal pagination techniques for automatic typesetting systems"	M
CS	886	Knuth	"Concept of a Meta-font"	2.3
CS	901	Fuchs, Knuth	"Optimal font caching"	2.6
CS	914	Gu, Hobby	"Using string matching to compress Chinese characters"	2.5
CS	960	Zabala	"Interacting with graphic objects"	4.9
CS	965	Ghosh	"An approach to type design and text composition in Indian scripts"	6.4
CS	966	Bigelow, Ghosh	"A formal approach to lettershape description for type design"	3.6
CS	974	Gu, Hobby	"A Chinese meta-font"	2.7
CS	977	Liang	"Word Hy-phen-a-tion by com-put-er"	4.7
CS	978	Knuth	"Lessons learned from METAFONT"	3.0
CS	980	Knuth	"The WEB system of structured documentation"	8.1
CS	981	Knuth	"Literate Programming"	2.4
CS	985	Samuel	"First Grade T <sub>E</sub> X"	3.9
CS	1013	Désarménien	"How to Run T <sub>E</sub> X in French"	3.3
CS	1027	Knuth	"A Torture Test for T <sub>E</sub> X"	9.2

The following preliminary report is not yet available from Stanford  
but can be obtained from

Maria Code, 1379 Sydney Drive,  
Sunnyvale CA 94087 (415) 735-8006

Knuth "T<sub>E</sub>Xware"

Available in a technical bookstore or from Maria Code:

Knuth *The T<sub>E</sub>Xbook*, published by Addison-Wesley (1984)  
Knuth *T<sub>E</sub>X: The Program*, published by Addison-Wesley (1985)

# MicroTeX™ is TeX

"I am pleased to verify that MicroTeX has passed the 'TRIP test suite,' giving results indistinguishable from those obtained on mainframe computers. It has indeed earned the right to be called TeX." — Donald E. Knuth (April 22, 1985)

Some things you should know about MicroTeX:

- \* TeX 1.4 implemented by David Fuchs for the IBM PC/XT, AT, and PC with a hard disk.
- \* Detailed system and driver documentation included.
- \* Fonts modified specifically for the Epson and IBM dot matrix printers.
- \* Optional font installation procedures to reduce disk storage space.
- \* Complete micro-, mini- and mainframe computer transportability.
- \* Ability to redirect DVI files to a disk, to be printed later.
- \* Driver "parallel processing" mode to increase document printing speed.
- \* Full utilization of extra memory.

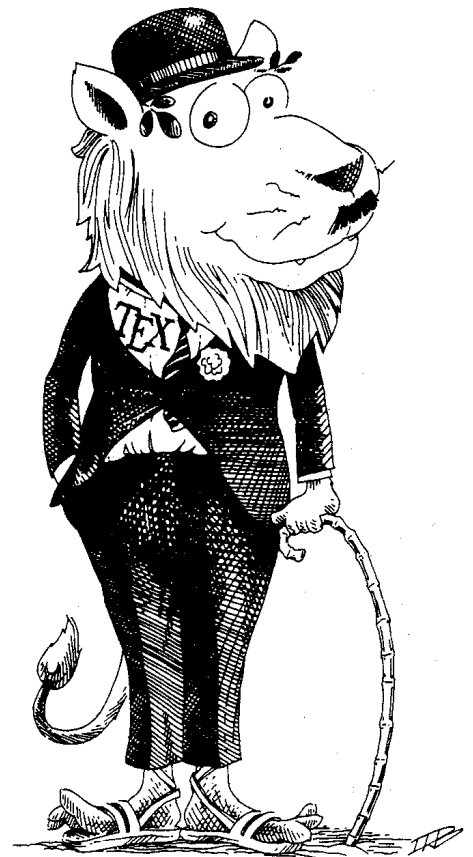
Addison-Wesley is the publisher of several books related to TeX, including: *The TeXbook* and *TeX: The Program*, by Knuth, as well as the forthcoming *L<sup>A</sup>TeX: A Document Preparation System*, by Leslie Lamport, and the Proceedings of the First European Conference on TeX for Scientific Documentation, edited by Dario Lucarella.

MicroTeX System Requirements:

- \* IBM PC/XT, AT, or IBM PC with a hard disk, or an MS-DOS compatible with a hard disk.
- \* MS or PC DOS, version 2.0 or later.
- \* Minimum 512K memory and a partition on your hard disk with at least 1.5 megabytes storage for the MicroTeX system with minimum fonts, or 4 megabytes with all the fonts included in the package.

MicroTeX supports these printers:

- \* Epson RX-, FX-, MX-, 80 and 100 printers
- \* IBM Graphics printers and Dot Matrix printers with GRAFTRAX and GRAFTRAXPLUS.
- \* Okidata 92 or 93 (with Plug'n Play).



TeX is a trademark of the American Mathematical Society, MicroTeX is a trademark of Addison-Wesley Publishing Company, Inc.; IBM is a registered trademark of International Business Machines, Inc.; Epson is a registered trademark of Epson, Inc.; Okidata is a trademark of Oki Electric Industry Company.

MicroTeX Order Form

35184

- Yes, please send me \_\_\_ copy(ies) of MicroTeX at \$495.00 each.  
 My check is enclosed (Orders paid by check will be shipped free of charge.)  
 Visa    MasterCard (Interbank# \_\_\_\_\_)    American Express

Card No. \_\_\_\_\_ Exp. Date \_\_\_\_\_

Signature \_\_\_\_\_

- Please bill my company. Your company order form and P.O. number must accompany your order. Thank you.

Name \_\_\_\_\_ Title \_\_\_\_\_

Firm/Institution \_\_\_\_\_ Department \_\_\_\_\_

Street \_\_\_\_\_ City/State/Zip \_\_\_\_\_

Telephone(\_\_\_\_) \_\_\_\_\_ Ext. \_\_\_\_\_

- I am interested in MicroTeX, but would like more information.  
 Please keep me informed about all MicroTeX developments and related products.

Send your order to:



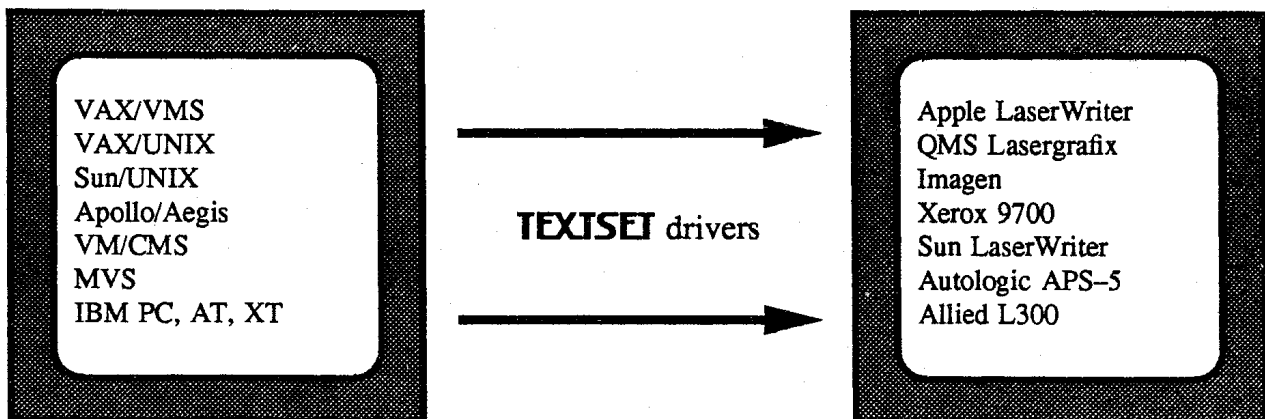
Addison-Wesley Publishing Company  
Educational and Professional Technologies Division  
Reading, MA 01867  
Telephone: (617) 944-6795

June 19, 1985

Attention T<sub>E</sub>X Users:

Every day I hear the same sorts of questions from T<sub>E</sub>X users across the country. They usually go something like this: "I have an XX Computer System and have been using T<sub>E</sub>X for the past year. It would really be nice if I could get from my DVI file on the XX to a printed page off of my YY Printer. Can you help?" Some of them go like this: "I've been using T<sub>E</sub>X with my YY Printer for some time now, but I can only use a few of the available fonts this way and there are lots of other restrictions. Can you help?"

Well, I'm happy to report that most of the time the answer is that we *can* help. **TEXTSET** has developed versatile T<sub>E</sub>X device drivers for many popular laser printers and phototypesetters.



If you've been wondering about device support for your T<sub>E</sub>X system, just give me call. I'd be glad to send you product documentation and try to arrange a demonstration for you.

In fact, if you have any questions at all about T<sub>E</sub>X, just give me a call. If I can't give you an answer, I'll connect you with someone who can.

Sincerely,

Bruce Baker  
Director  
Market Development

ps. I produced this advertisement on an Apple LaserWriter provided to **TEXTSET** by Adobe Systems, Inc.

# PCT<sub>E</sub>X<sup>TM</sup> is here!

## Complete T<sub>E</sub>X82 Typesetting for your PC/XT or AT

PCT<sub>E</sub>X is the first full implementation of Donald Knuth's T<sub>E</sub>X82 for the PC/XT or AT. It was recently chosen by the University of Michigan for site-wide use after careful evaluation against a competitive package. It has passed the TRIP test and been certified by Professor Knuth. It produces standard DVI files.

PCT<sub>E</sub>X includes a 120-page users manual written by Michael Spivak, together with a matching macro package, so a beginning user can easily learn to format letters, manuals, mathematics, homework assignments, and more.

Also included are the PLAIN and LaT<sub>E</sub>X macro packages. The PLAIN macro package lets you follow the examples and exercises in the T<sub>E</sub>Xbook. LaT<sub>E</sub>X is a full-featured macro package which allows production of articles, papers and manuals with table of contents and index.

PCT<sub>E</sub>X also includes the INITEX program, which lets you put almost anything you want into T<sub>E</sub>X's memory and save it so it will come again up in seconds. This is especially important if you intend to use or adapt large macro packages, or incorporate non-English hyphenation patterns.

Available as an option is PCDOT, a driver capable of printing T<sub>E</sub>X output on the

IBM graphics printer, EPSON FX and RX printers, the EPSON LQ1500, and the Toshiba 134x and 135x printers. Over 200 fonts are provided, including LaT<sub>E</sub>X fonts.

Another available option is a QMS Lasergrafix driver to produce professional quality typesetting from the QMS 800 and 1200 series printers. PCLaser will be available soon to print full T<sub>E</sub>X pages on a low-cost (\$3500 to \$5000) laser printer.

PCT<sub>E</sub>X was featured at the T<sub>E</sub>X for Scientific Documentation conference May 16-17 in Como, Italy. European users were enthusiastic about this low-cost workstation version of T<sub>E</sub>X which can be adapted to language-specific requirements.

PCT<sub>E</sub>X is available now: only \$279. PC-DOT dot-matrix printer driver, including over 200 fonts: \$100. (For IBM Graphics Printer, Epson FX RX printers, Epson LQ1500 and Toshiba 134x, 135x printers). QMS Lasergrafix driver: \$200.

System requirements: DOS 2.0 or better, 512K RAM, 10M hard disk. Include \$3. shipping and handling for each order. (Shipping to Canada: \$10. International Air Mail: \$30.) California residents add sales tax. MasterCard, Visa accepted. Foreign bank transfers direct payment to Personal TeX, Inc, acct # 0245-041744, at:

Wells Fargo Bank  
18 Miller Ave  
Mill Valley, CA 94941 USA

See PCT<sub>E</sub>X at the T<sub>E</sub>X User Group Meeting  
Stanford University, August 12-14.

Personal  
**T<sub>E</sub>X**  
Inc

20 Sunnyside, Suite H  
Mill Valley, CA 94941  
(415) 388-8853 Telex 275611

Trademarks: PCT<sub>E</sub>X, Personal T<sub>E</sub>X, Inc.; T<sub>E</sub>X, American Mathematical Society; IBM PC, IBM Corp; QMS, QMS, Inc.

This ad was generated using PCT<sub>E</sub>X, and printed on a Toshiba P361 dot-matrix printer.

**Request for Information**

The T<sub>E</sub>X Users Group maintains a database and publishes a membership list containing information about the equipment on which members' organizations plan to or have installed T<sub>E</sub>X, and about the applications for which T<sub>E</sub>X would be used.

Please answer the questions below, in particular those regarding the status of T<sub>E</sub>X and the computer(s)/operating system(s) on which it runs or is being installed. (Especially for IBM and VAX, the operating system is more relevant than the model.)

If it has not yet been done for your site, please also answer the questions about output devices on the other side of this form, obtaining information from the most knowledgeable person at your installation if necessary. If this information has already been provided by another TUG member, please indicate that member's name, and the information will be repeated. If you need more space than is provided here, feel free to use additional paper.

If your current listing is correct, you need not answer these questions again. Your cooperation is appreciated.

- Send completed form with remittance (checks, money orders, UNESCO coupons) to:  
T<sub>E</sub>X Users Group  
P. O. Box 594  
Providence, Rhode Island 02901, U.S.A.

- For foreign bank transfers direct payment to the T<sub>E</sub>X Users Group, account #002-610871, at:  
Rhode Island Hospital Trust National Bank  
One Hospital Trust Plaza  
Providence, Rhode Island 02903-2449, U.S.A.

- General correspondence about TUG should be addressed to:  
T<sub>E</sub>X Users Group  
P. O. Box 9506  
Providence, Rhode Island 02940-9506, U.S.A.

Name: _____
Home <input type="checkbox"/>   _____
Bus. <input type="checkbox"/>   Address: _____
_____
_____
_____

QTY	ITEM	AMOUNT
	1985 TUGboat Subscription/TUG Membership (Jan.-Dec.) - <b>North America</b> New (first-time): <input type="checkbox"/> \$20.00 each Renewal: <input type="checkbox"/> \$30.00; <input type="checkbox"/> \$20.00 - reduced rate if renewed before January 31, 1985	
	1985 TUGboat Subscription/TUG Membership (Jan.-Dec.) - <b>Outside North America</b> * New (first-time): <input type="checkbox"/> \$25.00 each Renewal: <input type="checkbox"/> \$35.00; <input type="checkbox"/> \$25.00 - reduced rate if renewed before January 31, 1985	
	TUGboat back issues, \$15.00 ** 1980 (v. 1) 1981 (v. 2) 1982 (v. 3) 1983 (v. 4) 1984 (v. 5) per issue, circle issue(s) desired: #1 #1, #2, #3 #1, #2 #1, #2 #1, #2	
	The T <sub>E</sub> Xbook by Donald E. Knuth - \$17.00 each	
	The T <sub>E</sub> Xbook: Errata and Changes (included with TUGboat) - additional copies \$3.00 each	
	First Grade T <sub>E</sub> X: A Beginner's T <sub>E</sub> X Manual by Arthur L. Samuel - \$6.00 each	
	User's Guide to the HP T <sub>E</sub> X Macros by Susan Daniels - \$6.00 each	
	T <sub>E</sub> X and Metafont: Errata and Changes (final edition, September 1983) - \$4.00 each	
	T <sub>E</sub> X Lectures on Tape (see cover 3, Vol. 6, No. 2 and cover 3, Vol. 5, No. 2)	

\* Air mail postage is included in the rates for all subscriptions and memberships outside North America.

\*\* Discount: 5-7 copies, 10%; 8 or more, 15%

TOTAL ENCLOSED: \_\_\_\_\_  
(Prepayment in U.S. dollars required)

\* \* \* \*

**Membership List Information**

Institution (if not part of address):

Title:

Phone:

Specific applications or reason for interest in T<sub>E</sub>X:

My installation can offer the following software or technical support to TUG:

Please list high-level T<sub>E</sub>X users at your site who would not mind being contacted for information; give name, address, and telephone.

Date:

Status of T<sub>E</sub>X:  Under consideration

Being installed

Up and running since

Approximate number of users:

Version of T<sub>E</sub>X:  SAIL

Pascal:  T<sub>E</sub>X82  T<sub>E</sub>X80

Other (describe)

From whom obtained:

Computer(s) and operating system(s):