

TEX nically...  
It's a breeze.

**SCIENTIFIC**  
word

It will have you typing mathematics in minutes. It's so easy, you can compose and edit directly on the screen without being forced to think in TEX.

And it gets even better! With Windows 3.0, you simply use the mouse to click on symbols and objects such as fractions, brackets, etc., and they appear in your document. Or, you can enter the same symbols with keyboard shortcuts.

**TSCI**

SOFTWARE RESEARCH, INC.

**Scientific Word** is a front end to TEX. It includes a Windows version of L<sup>A</sup>T<sub>E</sub>X and a Windows previewer. It stores files in ASCII L<sup>A</sup>T<sub>E</sub>X format and imports most existing L<sup>A</sup>T<sub>E</sub>X documents.

So chill out! Let **Scientific Word** make your life a breeze. All you need is a PC with Windows 3.0 or higher, running in standard or enhanced mode...and **Scientific Word**.

Call **800-874-2383**

to order your copy today. Ask about our 30 day money-back guarantee and our educational discount.....**It's that easy.**

1190 Foster Road • Las Cruces, NM 88001  
TEL: (505) 522-4600 • FAX: (505) 522-0116  
TELEX: 317629

# AP-TEX Fonts

TEX-compatible Bit-Mapped Fonts  
Identical to  
Adobe PostScript Typefaces

If you are hungry for new TEX fonts, here is a feast guaranteed to satisfy the biggest appetite! The AP-TEX fonts serve you a banquet of gourmet delights: 438 fonts covering 18 sizes of 35 styles, at a total price of \$200. The AP-TEX fonts consist of PK and TFM files which are exact TEX-compatible equivalents (including "hinted" pixels) to the popular PostScript name-brand fonts shown at the right. Since they are directly compatible with any standard TEX implementation (including kerning and ligatures), you don't have to be a TEX expert to install or use them.

When ordering, specify resolution of 300 dpi (for laser printers), 180 dpi (for 24-pin dot matrix printers), or 118 dpi (for previewers). Each set is on ten 360 KB 5-1/4" PC floppy disks. The \$200 price applies to the first set you order; order additional sets at other resolutions for \$60 each. A 30-page user's guide fully explains how to install and use the fonts. Sizes included are 5, 6, 7, 8, 9, 10, 11, 12, 14.4, 17.3, 20.7, and 24.9 points; headline styles (equivalent to Times Roman, Helvetica, and Palatino, all in bold) also include sizes 29.9, 35.8, 43.0, 51.6, 61.9, and 74.3 points.

## The Kinch Computer Company

PUBLISHERS OF TURBOTEX

501 South Meadow Street

Ithaca, New York 14850

Telephone (607) 273-0222

FAX (607) 273-0484

Helvetica, Palatino, Times, and New Century Schoolbook are trademarks of Allied Linotype Co. ITC Avant Garde, ITC Bookman, ITC Zapf Chancery, and ITC Zapf Dingbats are registered trademarks of International Typeface Corporation. PostScript is a registered trademark of Adobe Systems Incorporated. The owners of these trademarks and Adobe Systems, Inc. are not the authors, publishers, or licensors of the AP-TEX fonts. Kinch Computer Company is the sole author of the AP-TEX fonts, and has operated independently of the trademark owners and Adobe Systems, Inc. in publishing this software. Any reference in the AP-TEX font software or in this advertisement to these trademarks is solely for software compatibility or product comparison. LaserJet and DeskJet are trademarks of Hewlett-Packard Corporation. TEX is a trademark of the American Math Society. TurboTEX and AP-TEX are trademarks of Kinch Computer Company. Prices and specifications subject to change without notice. Revised October 9, 1990.

Avant Garde Bold

Avant Garde Bold Oblique

Avant Garde Demibold

Avant Garde Demibold Oblique

Bookman Light

Bookman Light Italic

Bookman Demibold

Bookman Demibold Italic

Courier

Courier Oblique

Courier Bold

Courier Bold Oblique

Helvetica

Helvetica Oblique

Helvetica Bold

Helvetica Bold Oblique

Helvetica Narrow

Helvetica Narrow Oblique

Helvetica Narrow Bold

Helvetica Narrow Bold Oblique

Schoolbook New Century Roman

Schoolbook New Century Italic

Schoolbook New Century Bold

Schoolbook New Century Bold Italic

Palatino Roman

Palatino Italic

Palatino Bold

Palatino Bold Italic

Times Roman

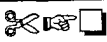
Times Italic

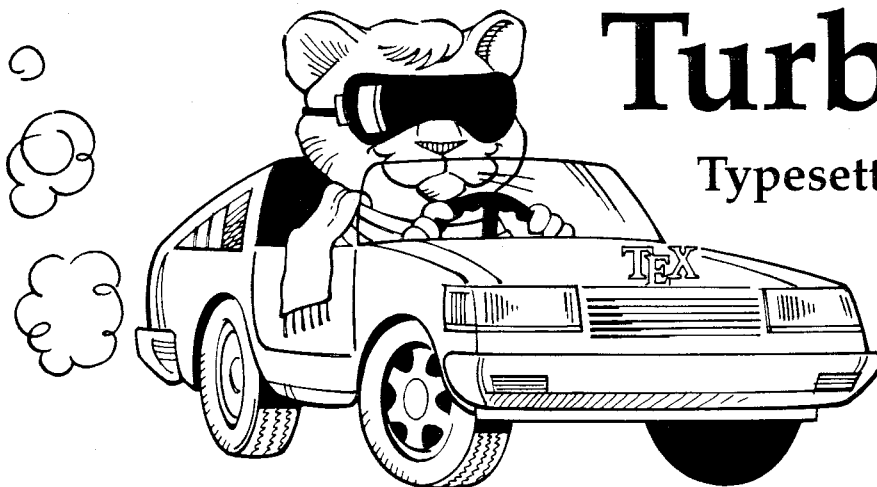
Times Bold

Times Bold Italic

Zapf Chancery Medium Italic

Symbol ΔΦΓΘΛΠΘ

Zapf Dingbats 



# TurboTEX

## Typesetting Software

Executables \$150  
With Source \$300

Now  
Windows  
Compatible!

**N**OW YOU CAN run the TEX typesetting system in the powerful and convenient graphical environment of Microsoft Windows, with the new Windows-compatible TurboTEX Release 3.1.

TurboTEX brings you the latest TEX 3.1 and METAFONT 2.7 standards and certifications: preloaded plain TEX, L<sup>A</sup>TEX, AMS-TEX and AMS-L<sup>A</sup>TEX, METAFONT, preview for EGA/VGA displays, Computer Modern and L<sup>A</sup>TEX fonts, and printer drivers for HP LaserJet and DeskJet, PostScript, and Epson LQ and FX dot-matrix printers. This wealth of software runs on your IBM PC (MS-DOS, Windows, or OS/2), UNIX, or VAX/VMS system.

■ **Best-selling Value:** TurboTEX sets the standard for power and value among TEX implementations: one price buys a complete, commercially-hardened typesetting system. *Computer* magazine recommended it as "the version of TEX to have," *IEEE Software* called it "industrial strength," and thousands of satisfied users worldwide agree.

TurboTEX gets you started quickly, installing itself automatically under MS-DOS or Microsoft Windows, and compiling itself automatically under UNIX. The 90-page User's Guide includes generous examples and a full index, and leads you step-by-step through installing and using TEX and METAFONT.

■ **Classic TEX for Windows.** Even if you have never used Windows on your PC, the speed and power of TurboTEX will convince you of the benefits. While the TEX command-

line options and *TEXbook* interaction work the same, you also can control TEX using friendly icons, menus, and dialog boxes. Windows protected mode frees you from MS-DOS limitations like DOS extenders, overlay swapping, and scarce memory. You can run long TEX formatting or printing jobs in the background while using other programs in the foreground.

■ **MS-DOS Power, Too:** TurboTEX still includes the plain MS-DOS programs. Even without expanded memory hardware, our virtual memory simulation provides the same sized TEX that runs on multi-megabyte mainframes, with capacity for large documents, complicated formats, and demanding macro packages.

■ **Source Code:** The portable C source to TurboTEX consists of over 100,000 lines of generously commented TEX, TurboTEX, METAFONT, previewer, and printer driver source code, including: our WEB system in C; PASCAL, our proprietary Pascal-to-C translator; Windows menus and text-mode interface library; and preloading, virtual memory, and graphics code, all meeting C portability standards like ANSI and K&R.

■ **Availability & Requirements:** TurboTEX executables for IBM PC's include the User's Guide and require 640K, hard disk, and MS-DOS 3.0 or later. Windows extensions require Microsoft Windows 3.0. Order source code (includes Programmer's Guide) for other machines. On the PC, source compiles with Microsoft C 5.0 or later (and Windows SDK for Windows extensions), Watcom C 8.0, or Borland C++ 2.0; other op-

erating systems need a 32-bit C compiler supporting UNIX standard I/O. Media is 360K 5-1/4" or 720K 3-1/2" PC floppy disks (please specify).

■ **Upgrade at Low Cost.** If you have TurboTEX Release 3.0, upgrade to the latest version for just \$40 (executables) or \$80 (including source). Or, get either applicable upgrade free when you buy the AP-TEX fonts (see facing page) for \$200!

■ **No-risk trial offer:** Examine the documentation and run the PC TurboTEX for 10 days. If you are not satisfied, return it for a 100% refund or credit. (Offer applies to PC executables only.)

■ **Free Buyer's Guide:** Ask for the free, 70-page Buyer's Guide for details on TurboTEX and dozens of TEX-related products: previewers, TEX-to-FAX and TEX-to-Ventura/Pagemaker translators, optional fonts, graphics editors, public domain TEX accessory software, books and reports.

### Ordering TurboTEX

Ordering TurboTEX is easy and delivery is fast, by phone, FAX, or mail. Terms: Check with order (free media and ground shipping in US), VISA, Mastercard (free media, shipping extra); Net 30 to well-rated firms and public agencies (shipping and media extra). Discounts available for quantities or resale. International orders gladly expedited via Air or Express Mail.

The Kinch Computer Company  
PUBLISHERS OF TURBOTEX  
501 South Meadow Street  
Ithaca, New York 14850 USA  
Telephone (607) 273-0222  
FAX (607) 273-0484

# VECTOR TEX

T B  
W u  
C S  
& H  
E A  
M

## TEX FOR THE 90'S

Are you still  
struggling with  
PXL's, PK's or GF's?  
Move on to scalable  
fonts:

- Save megabytes of storage—entire VT<sub>E</sub>X fits on one floppy.
- Instantly generate any font in any size and in any variation from 5 to 100 points. (386: unlimited)
- Standard font effects include compression, slant, smallcaps, outline, shading, shadow, and reverse print.
- Discover the universe of MicroPress Font Library professional typefaces: not available from any other T<sub>E</sub>X vendor.

VT<sub>E</sub>X: \$299

VT<sub>E</sub>X 386: \$399

VT<sub>E</sub>X Pro: \$549

VT<sub>E</sub>X 386 Pro: \$649

Includes the VT<sub>E</sub>X typesetter (superset of T<sub>E</sub>X), 10 scalable typefaces (**professional versions include 150 typefaces**), VVIEW (arbitrary magnification on EGA, CGA, VGA, Hercules, AT&T), VLASER (HP LaserJet), VPOST (PostScript), VDOT (Epson, Panasonic, NEC, Toshiba, Proprinter, Star, DeskJet) and manuals. S/H add \$5. COD add \$5.

WordPerfect Interface add \$100. Site licenses available. Dealers' inquiries welcome. Professional typefaces available for older implementations of T<sub>E</sub>X.



**MicroPress Inc.**

68-30 Harrow Street, Forest Hills, NY 11375  
Tel: (718) 575-1816 Fax: (718) 575-8038

# For T<sub>E</sub>X Users . . . .

## New Services and Prices from Computer Composition Corporation

We are pleased to announce the installation of several ***new output services*** now available to T<sub>E</sub>X users:

1. High Resolution Laser Imaging (1200 dpi) from Postscript diskette files created on either Mac- or PC-based systems.
2. High Resolution Laser Imaging (960 dpi) from DVI magnetic tape or diskette files using a variety of typefaces in addition to the Computer Modern typeface family.
3. High quality laser page proofs at 480 dpi.
4. **NEW PRICING** for high resolution laser imaging:
  - a. From **Postscript text files** in volumes over 400 pages . . . . **\$2.00 per page**
  - b. From **Postscript text files** in volumes between 100 & 400 pages . . . . . **\$2.25 per page**
  - c. From **Postscript text files** in volumes below 100 pages . . **\$2.40 per page**
  - d. From **DVI files** in volumes over 400 pages . . . . . **\$2.15 per page**
  - e. From **DVI files** in volumes between 100 & 400 pages . . . . . **\$2.30 per page**
  - f. From **DVI files** in volumes below 100 pages . . . . . **\$2.45 per page**

NOTE: DEDUCT \$1.00 FROM THE ABOVE PRICES FOR HIGH QUALITY LASER PAGE PROOFS.

5. **All jobs shipped within 48 hours.**

Call or write for page samples or send us your file and we will image it on the output unit of your choice.



**COMPUTER COMPOSITION CORPORATION**

1401 West Girard Avenue • Madison Heights, MI 48071

**(313) 545-4330      FAX (313) 544-1611**

— Since 1970 —

## T<sub>E</sub>X Publishing Services



### From the Basic:

The American Mathematical Society offers you two basic, low cost T<sub>E</sub>X publishing services.

- You provide a DVI file and we will produce typeset pages using an Autologic APS Micro-5 phototypesetter. \$5 per page for the first 100 pages; \$2.50 per page for additional pages.
- You provide a PostScript output file and we will provide typeset pages using an Agfa/Compugraphic 9600 imagesetter. \$7 per page for the first 100 pages; \$3.50 per page for additional pages.

There is a \$30 minimum charge for either service. Quick turnaround is also provided... a manuscript up to 500 pages can be back in your hands in one week or less.

### To the Complex:

As a full-service T<sub>E</sub>X publisher, you can look to the American Mathematical Society as a single source for any or all your publishing needs.

Macro-Writing	T <sub>E</sub> X Problem Solving	Non-CM Fonts	Keyboarding
Art and Pasteup	Camera Work	Printing and Binding	Distribution

For more information or to schedule a job, please contact Regina Girouard, American Mathematical Society, P. O. Box 6248, Providence, RI 02940, or call 401-455-4060.

### FOR YOUR T<sub>E</sub>X TOOLBOX

#### CAPTURE

Capture graphics generated by application programs. Make LaserJet images compatible with T<sub>E</sub>X. Create pk files from pcl or pcx files. . . . . \$135.00

#### texpic

Use texpic graphics package to integrate simple graphics—boxes, circles, ellipses, lines, arrows—into your T<sub>E</sub>X documents. . . . . \$79.00

#### Voyager

T<sub>E</sub>X macros to produce viewgraphs—including bar charts—quickly and easily. They provide format, indentation, font, and spacing control. . . . . \$25.00

### FOR YOUR T<sub>E</sub>X BOOKSHELF

#### T<sub>E</sub>X BY EXAMPLE

Input and output are shown side-by-side. Quickly see how to obtain desired output. . . . . \$19.95

#### T<sub>E</sub>X BY TOPIC

Learn to program complicated macros. . . . . \$29.25

#### T<sub>E</sub>X FOR THE IMPATIENT

Includes a complete description of T<sub>E</sub>X's control sequences. . . . . \$29.25

#### T<sub>E</sub>X FOR THE BEGINNER

A carefully paced tutorial introduction. . . . . \$29.25

#### BEGINNER'S BOOK OF T<sub>E</sub>X

A friendly introduction for beginners and aspiring "wizards." . . . . . \$29.95



Micro Programs Inc. 251 Jackson Ave. Syosset, NY 11791 (516) 921-1351

# TEX *without* Bitmaps

Wouldn't it be nice to be able to preview DVI files at any magnification, not just those for which bitmap fonts have been pre-built? Or to produce truly resolution-independent output that will run on any PostScript device, whether image setter or laser printer?

Perhaps you are looking for an alternative to Computer Modern? Well, there now exist complete outline font sets which include math fonts that are direct replacements for those in CM. Even if you do want to remain faithful to CM, there are distinct advantages to switching to the outline version of the fonts. We supply the tools to do all of this:

## **DVIWindo** — *preview DVI files calling for outline fonts*

- \* Preview at arbitrary magnification
- \* Preview in Windows™ — a simple, standardized user interface
- \* Print to any printer with a Windows printer driver
- \* Show EPSF files with preview on screen — and insert TIFF images.

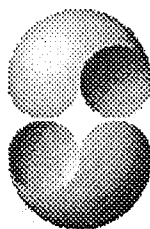
## **DVIPSONE** — *partial font downloading for speed and efficiency*

- \* Avoid running out of memory on the printer
- \* Produce truly resolution-independent output
- \* Designed from the bottom up for use with outline fonts on the PC

## **Fonts** — *available from Y&Y in Adobe Type 1™ form (ATM compatible)*

- \* BSR Computer Modern fonts — with accented characters built in
- \* L<sup>A</sup>T<sub>E</sub>X + S<sup>L</sup>I<sub>T</sub>E<sub>X</sub> fonts in outline form
- \* Euler font set — the most popular faces from the  $\mathcal{A}_M\mathcal{S}$  font set.
- \* Lucida®Bright + LucidaBrightMath — a complete alternative to CM

*Resolution-independent PostScript files using outline fonts can be printed by any service bureau, not just those with T<sub>E</sub>Xpertise — and that translates into considerable savings for you. Perhaps it is time to get rid of those huge, complex directories full of bitmap fonts?*



Y&Y, 106 Indian Hill, Carlisle, MA 01741 (800) 742-4059 (508) 371-3286 Fax: (508) 371-2004

# The solution is ETP.

$$\Delta \mathcal{P} = \sum_W \left[ Q_{IPR} \int_{4-1-87}^{\infty} (D_p + D_m + D_s)^T + \epsilon(P_m - I_P) dt \right] \equiv \text{ETP}$$

ETP Services offers solutions to the problems facing the publishers of technical books and journals, with a complete array of composition-related services.

## Electronic Technical Publishing Services Company

2906 N.E. Glisan Street  
 Portland, Oregon 97232  
 503-234-5522 • FAX: 503-234-5604  
 mimi@etp.com



Publishing Companion® translates

# WordPerfect

to

# TEX or L<sup>A</sup>TEX

## IN ONE EASY STEP!

With **Publishing Companion**, you can publish documents using TEX or L<sup>A</sup>TEX with **little or no TEX knowledge**. Your WordPerfect files are translated into TEX or L<sup>A</sup>TEX files, so anyone using this simple word processor can immediately begin typesetting their own documents!

Publishing Companion translates EQUATIONS, FOOTNOTES, ENDNOTES, FONT STYLES, and much more!

Retail Price .....	\$249.00
Academic Discount Price .....	\$199.00

For more information or to place an order, call or write:

**K-TALK**  
COMMUNICATIONS

30 West First Ave, Suite 100  
Columbus, Ohio 43201  
(614)294-3535  
FAX (614)294-3704

**TYPESET QUALITY WITH THE EASE OF WORD PROCESSING**

# TYPESETTING: JUST \$2.50 PER PAGE!

Send us your T<sub>E</sub>X DVI files and we will typeset your material at 2000 dpi on quality photographic paper — \$2.50 per page!

Choose from these available fonts: Computer Modern, Bitstream Fontware™, and any METAFONT fonts. (For each METAFONT font used other than Computer Modern, \$15 setup is charged. This ad was composed with PCT<sub>E</sub>X® and Bitstream Dutch (Times Roman) fonts, and printed on RC paper at 2000 dpi with the Chelgraph IBX typesetter.)

And the good news is: just \$2.50 per page, \$2.25 each for 100+ pages, \$2.00 each for 500+ pages! Laser proofs \$.50 per page. (\$25 minimum on all jobs.)

Call or write today for complete information, sample prints, and our order form. **TYPE 2000, 16 Madrona Avenue, Mill Valley, CA 94941. Phone 415/388-8873.**

**TYPE**  
**2000**

## Everything You Need At One Low Price...

# Announcing the New PCT<sub>E</sub>X Systems!

You can now receive a new PC T<sub>E</sub>X System, which includes PC T<sub>E</sub>X/386 plus a full set of printer drivers, complete with everything you need to create the highest quality typeset documents possible using a PC, all at one low price. We offer a **20% Discount to TUG Members**. Here are your choices:

### The PC T<sub>E</sub>X System for Laser Printers Includes:

- PC T<sub>E</sub>X
  - PC T<sub>E</sub>X/386
  - PTI View
  - PTI Laser/HP
  - PTI Laser/PS
  - PTI Jet
  - CM 300dpi Fonts
- Retail: \$599  
TUG Members: \$479

### The Big PC T<sub>E</sub>X System for Laser Printers Includes:

- PC T<sub>E</sub>X
  - Big PC T<sub>E</sub>X/386
  - PTI View
  - PTI Laser/HP
  - PTI Laser/PS
  - PTI Jet
  - CM 300dpi Fonts
- Retail: \$699  
TUG Members: \$559

### The PC T<sub>E</sub>X System for Dot Matrix Printers Includes:

- PC T<sub>E</sub>X
  - PC T<sub>E</sub>X/386
  - PTI View
  - PTI Dot/FX
  - PTI Dot/LQ
  - CM 240dpi & 180dpi Fonts
- Retail: \$499  
TUG Members: \$399

## Upgrade your Current Products and Get a Full Set of Printer Drivers, plus PCT<sub>E</sub>X/386, for only \$195

For those of you who already own PC T<sub>E</sub>X, PTI View, and at least one PTI Printer Driver, special System Upgrades\* are available to you as follows:

PC T<sub>E</sub>X Laser System Upgrade - \$195  
Big PC T<sub>E</sub>X Laser System Upgrade - \$245  
PC T<sub>E</sub>X Dot Matrix System Upgrade - \$175

### One Stop Shopping from Personal T<sub>E</sub>X, Inc.

We offer you a full range of T<sub>E</sub>X products to meet your every need... including graphics programs, fonts, spell-checkers, text editors, and T<sub>E</sub>X macros. Look for our new L<sup>A</sup>T<sub>E</sub>X book, *L<sup>A</sup>T<sub>E</sub>X for Everyone*, coming soon. For our free 1991 Product Catalog, demo diskette, or for further information, **call us today at (415) 388-8853.**

PERSONAL  
**T<sub>E</sub>X**  
INC

12 Madrona Avenue • Mill Valley, CA 94941 • Phone: (415) 388-8853 • Fax: (415) 388-8865

In Europe: (31) 703237241 • (49) 24167001 • (49) 80248011 • (49) 73126932 • (44) 742351489 • (39) 290091773  
(33) 169073688 • In Asia: (886) 35335179 • In Australia: (61) 34599671

\* You must provide proof of prior purchase of PC T<sub>E</sub>X, PTI View, and a PTI Printer Driver. Upgrades do not include CM Fonts. PC T<sub>E</sub>X is a registered TM of Personal T<sub>E</sub>X, Inc. T<sub>E</sub>X is an American Mathematical Society TM. Site licenses available to qualified organizations. Inquire about PTI distributorships. This ad was typeset using PC T<sub>E</sub>X and Bitstream Fonts.

**A complete T<sub>E</sub>X solution that implements all the T<sub>E</sub>X 3.14 capabilities, including virtual fonts and the Extended Font standard adopted at the TUG '90 meeting in Cork.**

*ArborText put it all together. You don't have to!*

**ArborText's T<sub>E</sub>X 3.14 provides everything you need in a complete, ready-to-use package:**

Utilize the Extended T<sub>E</sub>X Font Encoding capability with *pre-built virtual fonts* for Computer Modern and PostScript

Use the conversion utilities we supply to make your own extended fonts from existing T<sub>E</sub>X 2.0 style fonts

Easily accent characters from your foreign language keyboard

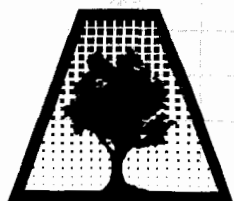
Create multi-language documents

Choose from included hyphenation patterns for English, French, German, Dutch, Spanish, Portuguese, or add your own

Use the extended version of Plain T<sub>E</sub>X and L<sup>A</sup>T<sub>E</sub>X

We've provided access to the New Extended Fonts directly—  
*macro source included!*

T<sub>E</sub>X 3.14 and support software is available for Sun, IBM RS6000, DEC/Risc-Ultrix, HP 9000, and IBM PCs,



# Design and Production with T<sub>E</sub>X, without compromise

PRONK&ASSOCIATES INC. is a full-service design and production studio.

For ten years we have been providing design and production to publishers such as Addison-Wesley; Houghton Mifflin; Holt, Rinehart and Winston; McGraw-Hill Ryerson; Prentice-Hall and many others.

Utilizing T<sub>E</sub>X as our main production tool, our company is dedicated to excellence in all aspects of book production.

## Design

Our first commitment is to bring creative excellence to each project. For the past six years we have designed books for production with T<sub>E</sub>X and PostScript and have learned to make full use of the power this combination makes possible. One, two and four-color books are created, in T<sub>E</sub>X, without compromising design.

## Graphics

Custom designed logos, charts, graphs and diagrams are produced in-house. Our studio is equipped to handle large volumes, working from either hard copy or directly from your data files. We also produce complex four-color graphics, conventional illustration and photography.

## Typesetting

Electronic files created in T<sub>E</sub>X or any other word processing program are accepted and converted to a final T<sub>E</sub>X document for PostScript output in one, two or four colors. The power of the T<sub>E</sub>X/PostScript partnership allows logos, rules, graphics, screened tints to be called for in T<sub>E</sub>X macros and then written to a final PostScript file in full color.

## Proofing

Page proofs are supplied with pale grid lines to indicate columns, gutters, and placement of common page elements. This type of proof allows for instant recognition of short pages and non-aligned elements. Final page proofs for two and four-color books can be run very economically in color.

## Output

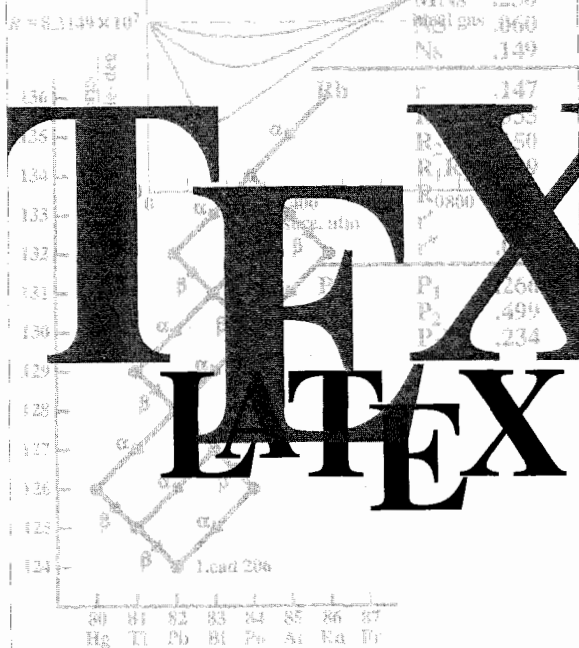
Final files can be output on any PostScript device. We will supply final plate-ready negative film to your printer's specifications or we will supply electronic files to your specifications. Files can be prepared in color-separated four-page imposed signatures for output on a large format imagesetter.

## Pronk&Associates Inc.

BOOK DESIGN AND PRODUCTION  
1129 LESLIE STREET,  
DON MILLS, ONTARIO  
M3C 2K5 CANADA  
PHONE (416) 441-3760  
FAX (416) 441-9991

**TeX Software for VMS****Convergent TeX****T2/view****T2/script****T2/ln03****T2/jet**

System	Type	Proquet
ARO	A	.447
	B	.082
	AR	.034
	O	.437
MNS	MS	.201
	Ms	.093
	MNS	.260
	MNs	.136
	MNS	.060
Ns		.149



**Northlake Software**  
812 SW Washington, Suite 1100  
Portland, Oregon 97205-3215  
USA  
800-845-9111 503-228-3383  
Fax 503-228-5662



**ArborText Inc.**  
1000 Victors Way  
Ann Arbor, MI 48108  
USA  
313-996-3566 Fax 313-996-3573



# TeXSPERT

Beckman's Diagnostics Systems Group is a world leader in laboratory and hospital instrument systems. Our products play a vital role in improving the quality of life worldwide. You can become a part of our exciting efforts.

We are currently seeking a TeXSPERT to design and develop advanced TeX macro and style files for Beckman's technical information and documentation systems. Experience with LaTeX language development required. Knowledge of postscript helpful.

We offer excellent compensation and benefits packages. Please send your resume to:

**Beckman Instruments, Inc., Professional Staffing-VO-Tugboat, 250 S. Kraemer Blvd., Brea, CA 92621.** An affirmative action employer.

## BECKMAN

### Index of Advertisers

- 118 American Mathematical Society
- 124 ArborText
- 126 Beckman Instruments
- Cover 3 Blue Sky Research
- 117 Computer Composition
- 120 ETP (Electronic Technical Publishing)
- 121 K-Talk Communications
- 114, 115 Kinch Computer Company
- 116 MicroPress, Inc.
- 118 Micro Programs, Inc.
- 126 Northlake Software
- 123 Personal TeX Inc.
- 125 Pronk&Associates
- 113 TCI Software
- opposite cover 3 TeX Users Group
- 122 Type 2000
- 119 Y&Y

North America

**ABRAHAMS, Paul**

214 River Road, Deerfield, MA 01342; (413) 774-5500  
Development of TeX macros and macro packages. Short courses in TeX. Editing assistance for authors of technical articles, particularly those for whom English is not their native language. My background includes programming, computer science, mathematics, and authorship of "TeX for the Impatient".

**AMERICAN MATHEMATICAL SOCIETY**

P. O. Box 6248, Providence, RI 02940; (401) 455-4060  
Typesetting from DVI files on an Autologic APS Micro-5 or an Agfa Compugraphic 9600 (PostScript).  
Times Roman and Computer Modern fonts.  
Composition services for mathematical and technical books and journal production.

**ANAGNOSTOPOULOS, Paul C.**

433 Rutland Street, Carlisle, MA 01741; (508) 371-2316  
Composition and typesetting of high-quality books and technical documents. Production using Computer Modern or any available PostScript fonts. Assistance with book design. I am a computer consultant with a Computer Science education.

**ARBORTEXT, Inc.**

535 W. William, Suite 300, Ann Arbor, MI 48103;  
(313) 996-3566  
Typesetting from DVI files on an Autologic APS-5.  
Computer Modern and standard Autologic fonts.  
TeX installation and applications support.  
TeX-related software products.

**ARCHETYPE PUBLISHING, Inc.,**

**Lori McWilliam Pickert**

P. O. Box 6567, Champaign, IL 61821; (217) 359-8178  
Experienced in producing and editing technical journals with TeX; complete book production from manuscript to camera-ready copy; TeX macro writing including complete macro packages; consulting.

**THE BARTLETT PRESS, Inc.,**

**Frederick H. Bartlett**

Harrison Towers, 6F, 575 Easton Avenue,  
Somerset, NJ 08873; (201) 745-9412  
Vast experience: 100+ macro packages, over 30,000 pages published with our macros; over a decade's experience in all facets of publishing, both TeX and non-TeX; all services from copyediting and design to final mechanicals.

**COWAN, Dr. Ray F.**

141 Del Medio Ave. #134, Mountain View, CA 94040;  
(415) 949-4911  
*Ten Years of TeX and Related Software Consulting Books, Documentation, Journals, and Newsletters*  
TeX & LaTeX macropackages, graphics; PostScript language applications; device drivers; fonts; systems.

**DOWNES, Michael**

49 Weeks Street, North Smithfield, RI 02895;  
(401) 762-3715  
Instruction in  $\mathcal{A}\mathcal{M}\mathcal{S}$ -TeX, AMS-LaTeX, plain TeX, and advanced macro writing. Custom documentstyles.  
Consulting: ■ advanced mathematical typesetting topics; ■ tuning mathematics fonts; ■ getting the most out of TeX in a production environment. Troubleshooting.

**ELECTRONIC TECHNICAL PUBLISHING SERVICES CO.**

2906 Northeast Glisan Street, Portland, Oregon 97232-3295;  
(503) 234-5522; FAX: (503) 234-5604  
Total concept services include editorial, design, illustration, project management, composition and prepress. Our years of experience with TeX and other electronic tools have brought us the expertise to work effectively with publishers, editors, and authors. ETP supports the efforts of the TeX Users Group and the world-wide TeX community in the advancement of superior technical communications.

**HOENIG, Alan**

17 Bay Avenue, Huntington, NY 11743; (516) 385-0736  
TeX typesetting services including complete book production; macro writing; individual and group TeX instruction.

**KUMAR, Romesh**

1549 Ceals Court, Naperville, IL 60565; (708) 972-4342  
Beginners and intermediate group/individual instruction in TeX. Development of TeX macros for specific purposes. Using TeX with FORTRAN for custom-tailored software. Flexible hours, including evenings and weekends.

**MAGUS, Kevin W. Thompson**

P. O. Box 390965, Mountain View CA 94039-0965;  
(800) 848-8037; (415) 940-1109; magus@cup.portal.com  
LaTeX consulting from start to finish. Layout design and implementation, macro writing, training, phone support, and publishing. Can take LaTeX files and return camera ready copy. Knowledgeable about long document preparation and mathematical formatting.

**OGAWA, Arthur**

920 Addison, Palo Alto, CA 94301; (415) 323-9624  
Experienced in book production, macro packages, programming, and consultation. Complete book production from computer-readable copy to camera-ready copy.

**QUIXOTE, Don Hosek**

440F Grinnell, Claremont, CA 91711; (714) 625-0147  
Complete line of TeX, LaTeX, and METAFONT services including custom LaTeX style files, complete book production from manuscript to camera-ready copy; custom font and logo design; installation of customized TeX environments; phone consulting service; database applications and more. Call for a free estimate.

**RICHERT, Norman**

1614 Loch Lake Drive, El Lago, TX 77586;  
(713) 326-2583  
TeX macro consulting.

**TeXNOLOGY, Inc., Amy Hendrickson**

57 Longwood Ave., Brookline, MA 02146;  
(617) 738-8029  
TeX macro writing (author of MacroTeX); custom macros to meet publisher's or designer's specifications; instruction.

---

Outside North America

**TYPOTeX LTD.**

Electronical Publishing, Battyány u. 14. Budapest, Hungary  
H-1015; (036) 11152 337  
Editing and typesetting technical journals and books with TeX from manuscript to camera ready copy. Macro writing, font designing, TeX consulting and teaching.

July 27 to 30, 1992

# 13th Annual T<sub>E</sub>X Users Group Meeting



## PORTLAND, OREGON

▲ Mark your calendars and join us in Portland, the home of 20-pound salmon and 20-story buildings. Ride light rail trains over cobblestone streets, ski Mt. Hood and attend the symphony in the same day—even in July. A friendly city, Portland charms its visitors with a variety of attractions including:

Windsurfing

A trip up the Columbia River on a sternwheeler

Tours of the wine region

The Metro Washington Park Zoo

Portland Center for the Performing Arts

Oaks Amusement Park

Oregon Art Institute

Scenic Washington County

Oregon Museum of Science and Industry

World Forestry Center

Mt. Hood

Portland Saturday Market for arts and crafts

Of special interest to TUG Meeting attendees may be the 11th Annual Mt. Hood Festival of Jazz to be held August 1st and 2nd in Gresham, Oregon, a suburb of Portland.

For a complete visitors' guide, *The Portland Book*, call the Portland Visitors' Center at (800) 345-3214.

### T<sub>E</sub>X in Context

#### Resources, Support Tools, and Comparative Studies

▲ During four information-packed days, we'll delve into front-ends for T<sub>E</sub>X, inclusion of graphics within T<sub>E</sub>X documents as well as exportation of T<sub>E</sub>X output to other graphics programs, comparisons of implementations of T<sub>E</sub>X on microcomputers, network access and resources, educational issues, and translation between T<sub>E</sub>X and word-processors.

Presentations

Workshops

Networking Luncheons

Exhibits

Panel discussions

Classes

▲ We'll meet and stay at the Benson Hotel, Portland's premier hotel recently restored to its grand stature of the early 1900s. A registered historic landmark, the Benson was built by Oregon lumberman, Simon Benson using elaborate craftsmanship and imported wood interiors. Special TUG rates: \$89/night (available until June 26 only.)

▲ Program coordinator:

Mimi Lafrenz

ETP Services Co.

Program committee:

Helen Gibson

Wellcome Institute

Doug Henderson

Blue Sky Research

Ron Whitney

T<sub>E</sub>X Users Group

▲ Watch your mail and future issues of *TUGboat* and *T<sub>E</sub>X & TUG News* for more details. In the meantime, if you have questions, contact:

**T<sub>E</sub>X Users Group**

Phone: (401) 751-7760

Fax: (401) 751-1071

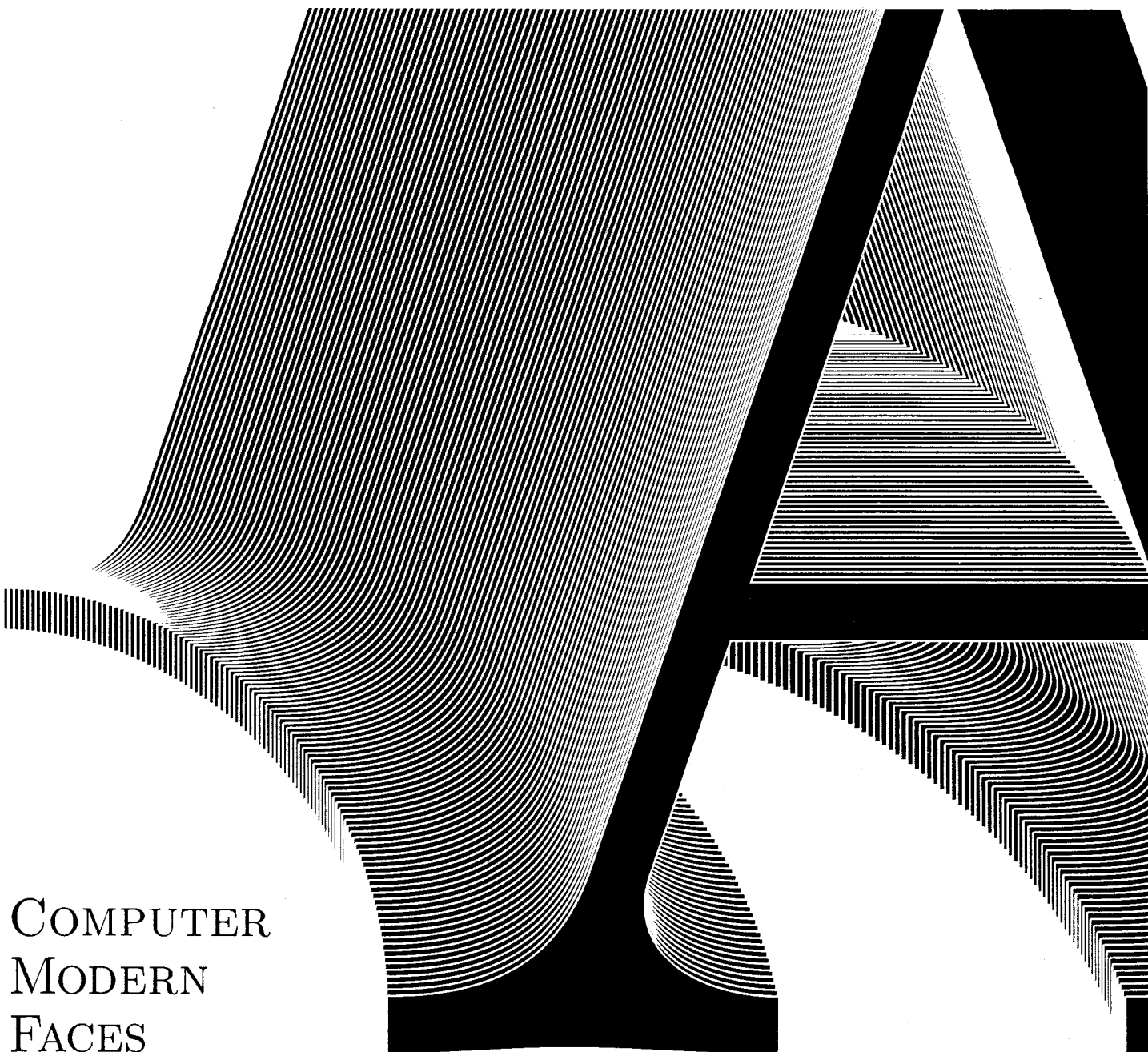
e-mail: [tug@math.ams.com](mailto:tug@math.ams.com)

P.O. Box 9506

Providence, RI 02940







COMPUTER  
MODERN  
FACES

ADOBE  
TYPE 1  
POSTSCRIPT  
FONTS

BLUE  
SKY  
RESEARCH

Forty faces of Computer Modern  
designed by Donald Knuth  
published in Adobe Type 1 format  
compatible with  
Adobe Type Manager  
and all PostScript printers

\$345.00 Educational \$195.00  
Macintosh or MS-DOS

Blue Sky Research  
534 Southwest Third Avenue  
Portland, Oregon 97204 USA  
(800) 622-8398, (503) 222-9571  
FAX (503) 222-1643